

SEEN CAMPING

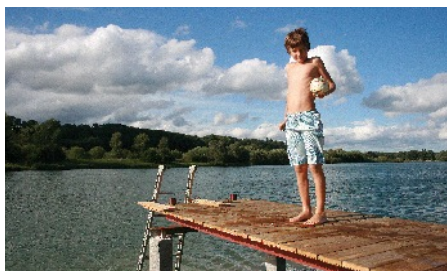
KRAUCHENWIES
★★★★

Short access routes from Stuttgart, Ulm, Zürich or the Lake Constance are the reason why our campsite is an ideal destination even for a short trip over the weekend.

You will find more current information on the site, as well for our sports and animation offers, at any time under www.seencamping.de.

Come and see us soonish!

Seencamping Krauchenwies
Ablacher Straße 4
72505 Krauchenwies
Phone: +49 (0)7576 / 924 40 00
info@seencamping.de
www.seencamping.de



SEEN CAMPING

KRAUCHENWIES
★★★★



Seencamping Krauchenwies

Your 4-star-campsite in the Swabian Mountains



Seencamping Krauchenwies is situated directly on the water's edge of the Ablacher See on a plain open countryside parcelled out through bushes and hedges.

The lake with lawn, pebble beach and bathing jetty is available for all camping guests for bathing and fishing. The whole lake and extended parts of the shore are natural reserve. Therefore you can expect an excellent quality in water and air.

Our campsite offers 75 for caravan and mobil homes, a grass area for tents and five "barrel hotels".

The campsite offers a very groomed sanitary area in an excellent condition with separate facilities for men and women.

Moreover, there is a laundry with washing machines, dryers and possibilities for washing up, a children's playground and a recreation room.

The village of Krauchenwies provides all of basic supply. You will find a butcher and a bakery as well as a post office, a bank and several doctors.

It doesn't matter at which season you spent your time there the Swabian Mountains offer activity and recreational holiday with many possibilities for planning your leisure time. Therefore our campsite is opened all around the year.

We are looking forward to your booking reservation under the following website www.seencamping.de.

From Seencamping Krauchenwies it is only a short hop to the many leisure activities the Donautal, the Swabian Mountains and the Lake Constance are offering.

You can relax on a walk around the lake or on a bike tour on many of the cycle routes around the Ablach Lakes. Also enjoying the nature by climbing or canoeing in the Donautal or exploring many of the tourist attractions all around the "Zollernalb" like Burg Hohenzollern or the Castle of Sigmaringen is easily possible for you.

Finally several golf courses, thermal baths and gliding airfields near the campsite will let you have wonderful experiences.

